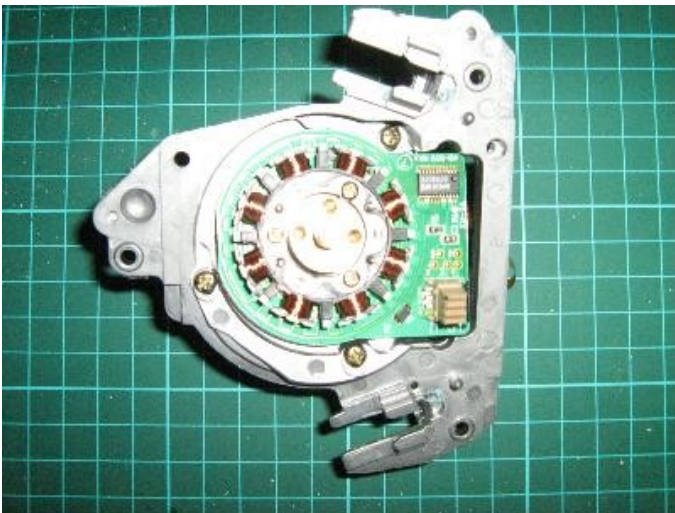




*Fig 1 VCR Rotor Top View*



*Fig 2 VCR Rotor Bottom View*



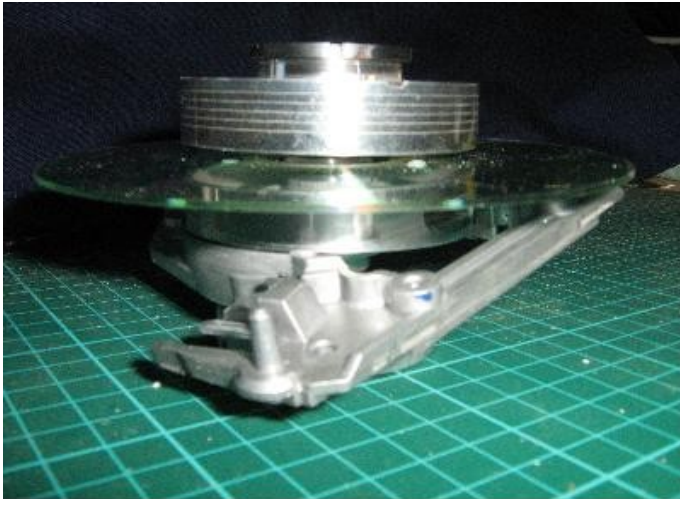
*Fig 3 Rotor with flywheel removed*



*Fig 4 Disassembled rotor*



*Fig 5 CD attached to rotor*

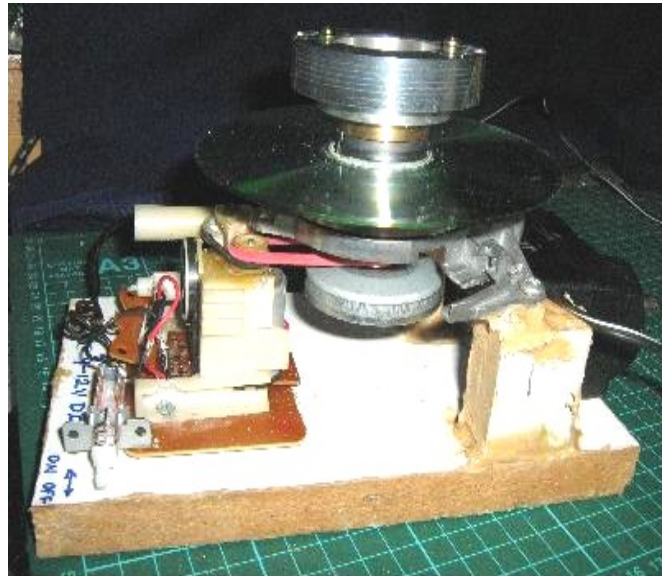


*Fig 6 Reassembled rotor & CD*





*Fig 7 Reassembled rotor, bottom view*



*Fig 8 Drive motor, pulley and belt.*



*Fig 9 Top view of centrifuge bowl*



*Fig 10 Side view, bowl in place.*



*Fig 11 Tube carriers and trunnions*



*Fig 12 Completed centrifuge*