

Laser Field Repatterning

Andreanna Rainville RN

www.nurseandi.com

info@nurseandi.com

Phone: 206-390-9420

Fax: 206-938-1218

Color coding of Homeopathic Vials



- Vials are color coded to make it easier for patients
- Green is normal organs
- Red is the endocrine system
- Blue is psychological support
- Yellow are toxins these are not sold to patients

Vial placement in laser



- After you determine the correct vial slip in into the top opening of the copper holder on the front of the laser

With a pill in the laser chamber



- When you place a pill or dry substance in the laser chamber there is no change of the laser presentation it stays a dot

Liquids in the laser chamber



- When you place a liquid in front of the laser beam you will see a line instead of a dot

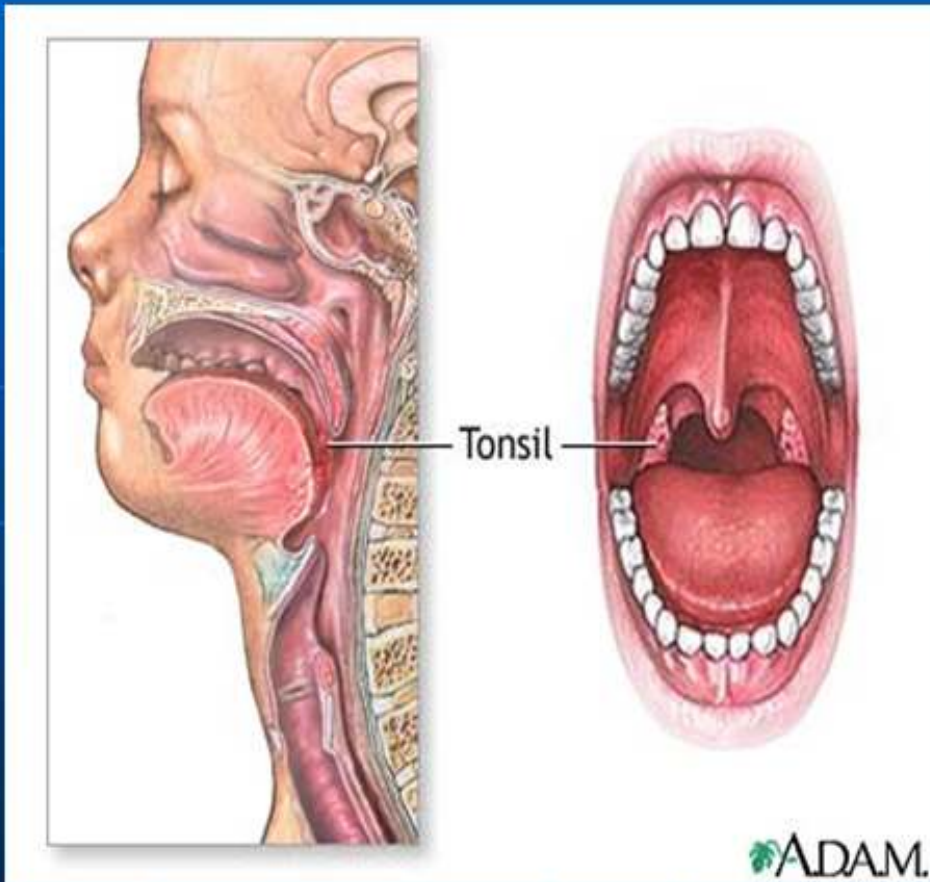
Sweep the line from the biophoton field, from below the feet, up through the body and to the biophoton field above the head



Sweep the ears (reflex points for the entire body)



Take Care of Your Tonsils



- Tonsils are like the bathtub plug for the brain always remember to take the plug out by lasering them from either the inside or outside.

Sweep the organs you want to clear



- Tonsils are a vital region to make sure is open and draining
- Support drainage remedies are helpful to laser with, i.e. lymphomyosot drainage remedies

Tonsils from the outside

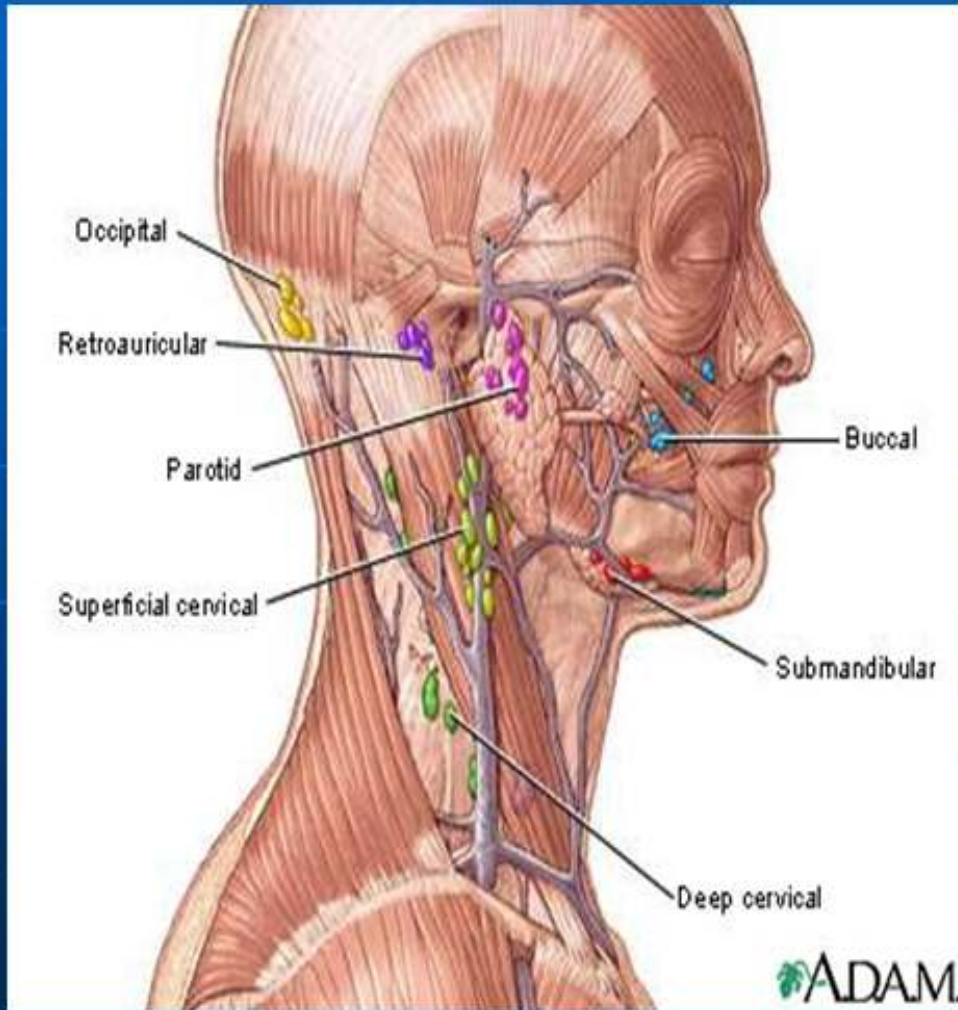


- You do not have to go inside the mouth to treat the tonsils, however you are also treating the superior cervical ganglion as well

Drain the lymphatic chains in the back of the neck as well as tonsils

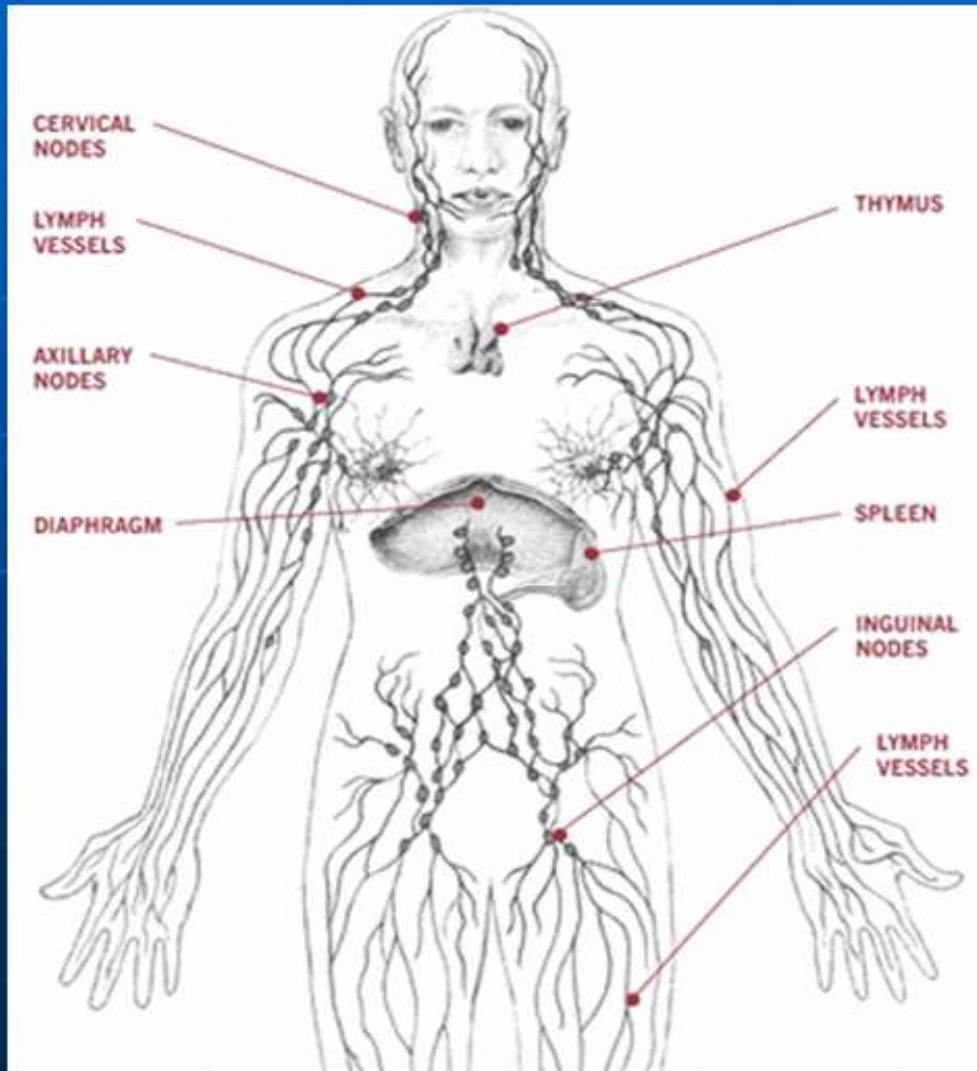


Drain the Lymphatics



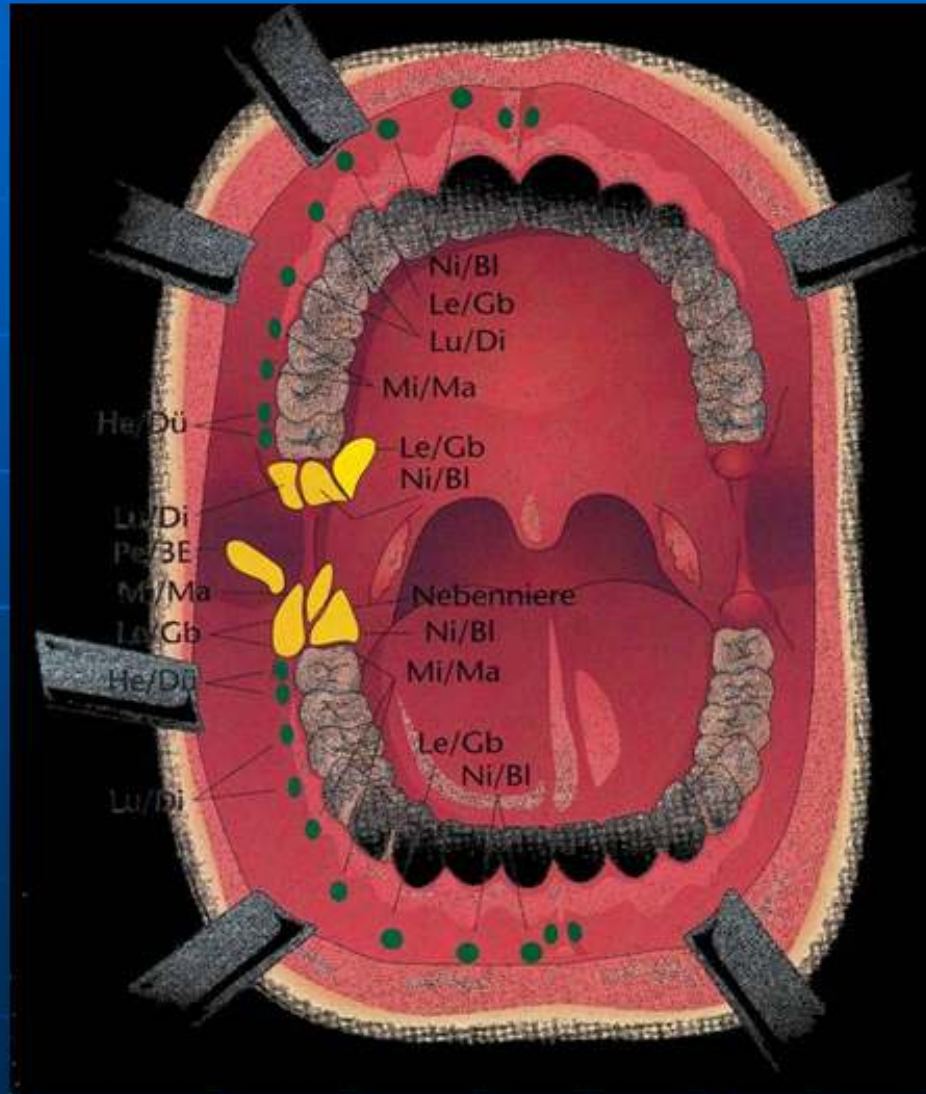
- Brain fog, and other brain / mind dysfunctions can be exacerbated by a congested lymphatic system
- Swipe the laser with lymph vial over the nodes along the head and neck

Lymphatic System



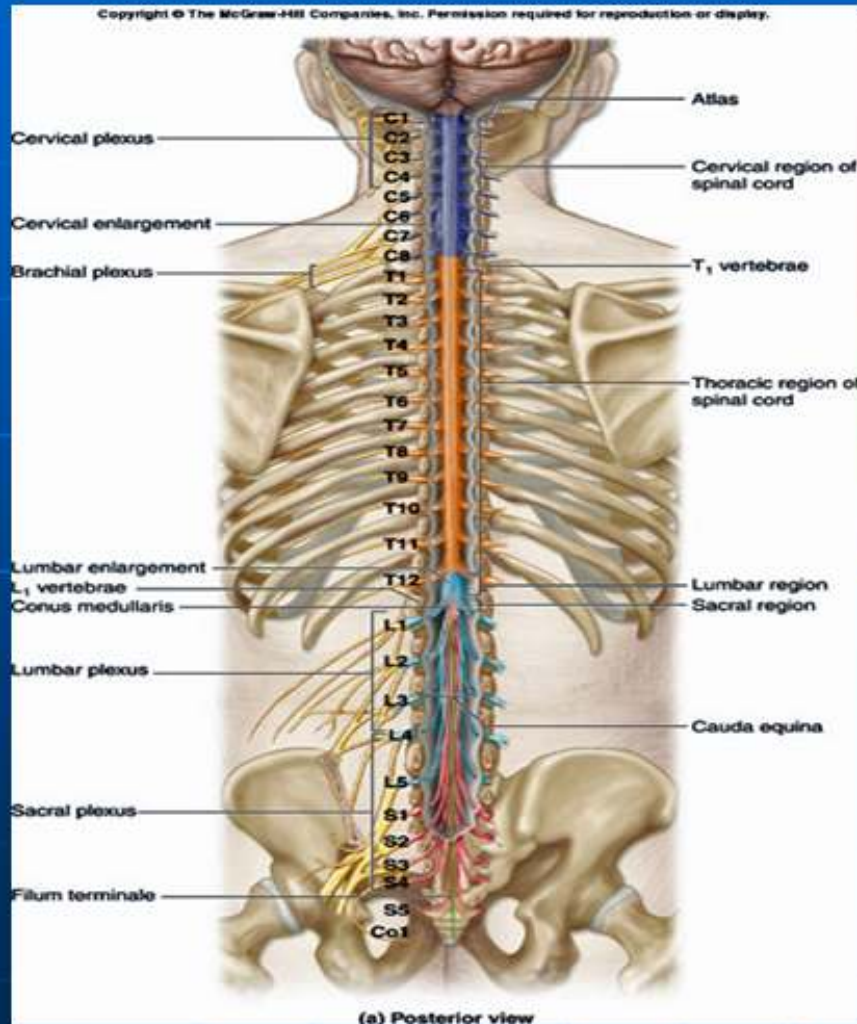
Swipe the laser beam over the lymphatic nodes and duct ways with the lymph vial, procaine vial, or apply lymphatic cream and then laser

Oral Photo-puncture



- Shine the laser onto your tender trigger points in the bucal (cheek and lip) points for 10-20 seconds

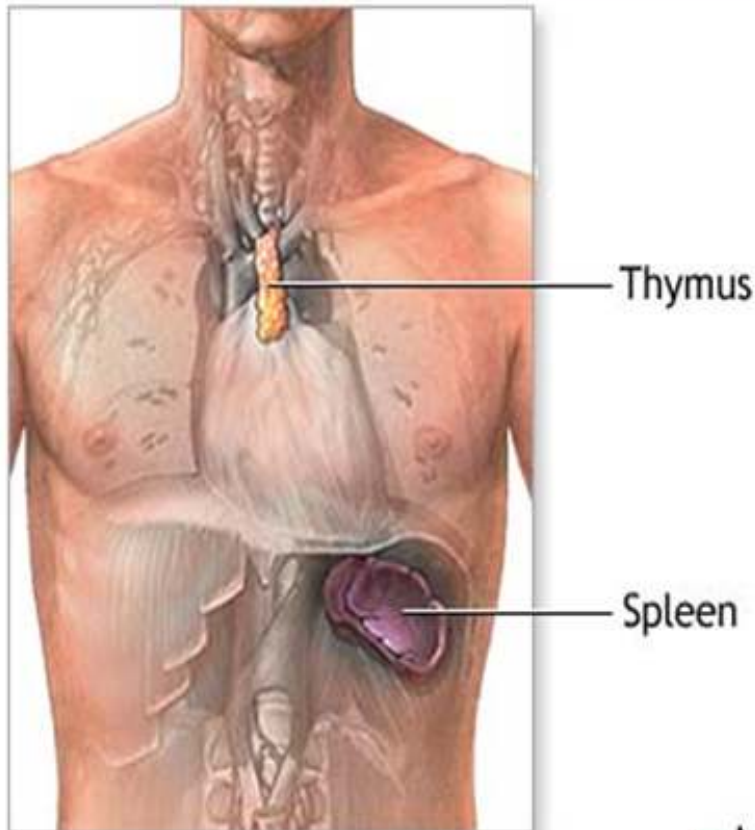
Central Nervous System Sweep



- Sweep the laser beam down the spine from brain to tailbone to help balance the nervous system

Immune Modulation

- Sweep the laser beam over the thymus and spleen to balance immune modulation.



ADAM.

Photophoresis Treatment

Apply remedy on skin and laser



First Aid

- Quite unexpectedly several people have reported the laser to be very helpful as a first aid treatment.
- As soon as injury occurs you grab the laser and swipe the injury for 3 minutes
- This has the ability to take bruising away instantly

Drain the organs of Elimination



- It is always important to support the chanelns of the body that get rid of toxins
- This is how to support the kidneys and adrenals

Laser the Liver



- The liver is important to keep open and draining especially with viral infections and heavy metal detoxification

Treat the omentum



- By treating the omentum, you help balance the neurotransmitters as well as supporting small and large intestines

24 Hour Organ Cycle

- 11p-1a Gall Bladder
- 1a-3a Liver
- 3a-5a Lung
- 5a-7a Large Intestine
- 7a-9a Stomach
- 9a-11a Spleen/Pancreas
- 11a-1p Heart
- 1p-3p Small Intestine
- 3p-5p Urine Bladder
- 5p-7p Kidney
- 7p-9p Circulation
- 9p-11p Endocrine (TW)